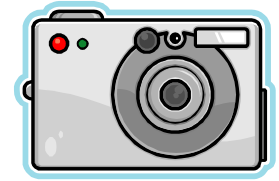




Reflections Program 2009-2010



Beauty Is ...

Would you like to show others your talent as a creative writer, photographer, musician, choreographer or artist?

You can if you participate in the PTA Reflections Program this year!

Students can enter in six categories (choose one or enter them all)

Literature

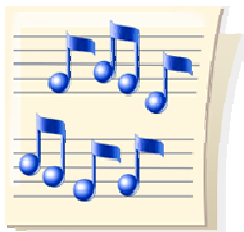
Photography

Musical Composition

Visual Arts

Dance Choreography

Film Production



This year's theme - **Beauty Is...**

Find a way to show what the theme means to you and showcase your talent!

All entries will be displayed @ Hubble and students with advancing artwork will be eligible for a gift card

The deadline for all entries:
October 16th



For more information contact:
Sue White 630-690-5660

See reverse for more details and rules

RULES-IN-BRIEF

2009-2010 National PTA Reflections Program

“Beauty is...”

Literature: Must be handwritten or typed by the student on any paper not to exceed 8 1/2 x 11 inches in size. (Grade 1 and younger and Special Education students may be assisted without altering child’s words.) Work must be no more than 2,000 words. Could be: poem, play, short story, essay, etc. Literature projects may be in student’s native language but must be translated into English without altering the student’s expression. Entries must reflect grade appropriate grammar, punctuation and spelling. All pages should be numbered with student’s name on the back of every sheet along with completed student entry form.

Musical Composition: Score with or without words on 8 ½ x 11” paper (11 x 17” paper for band or orchestra.) Notes on staff paper, purchased, hand drawn or computer generated. Music must be recorded on a CD and cannot exceed five (5) minutes in length. Grades 5 and younger may have help with music notation or submit iconic (made up) notation. Grades 6 and up must have music notation without help. Student does not have to play music for the recording but must state who did on entry form. Place CD in a cardboard or plastic case marked with name/grade/IL/year and length of piece. Attach score and entry form in a large envelope. Along with the entry form. Listen to the CD on standard CD player to make sure it recorded properly.

Photography: Photography up to 11 x 14 inches (including mat). Photography may be black and white or color. The student must snap the photograph using any still camera. A student may submit a photo, collage, retouched print, multiple exposure, etc. No added graphics or lettering over image. Specify location and ate of shot on entry form.

Visual Arts: Artwork can be up to 20 x 24 inches in size, or smaller (Full size poster board is 22 x 28 – suggestion – cut 10” off the end and make the artwork 18 x 22). This is an Illinois PTA requirement. Completed project must be flat. Do not glue on anything that will not be completely flat on your paper. Could be: drawing, painting, printmaking, collage, etc. No copyrighted images (such as cartoon characters) **Artwork that is framed or on stretched canvas will be disqualified.**

Dance/ Choreography: Entries must be recorded on DVD or CD not to exceed three (3) minutes. Artist statements must be stated at the beginning of performance and is not included in the 3 minute limit. Choreography must be the work of one student who may or may not be one of a maximum of 3 performers. If costumes are used, the choreographer must create them as well. Save DVD as a file, not a movie and watch it on a standard DVD player to make sure it can be viewed in this format. Title, composer and performer of any background music is documented on entry form. Place CD in a cardboard or plastic case marked with name/grade/IL/year and length of piece. Place DVD in a large envelope along with entry form.

Film/Video Production: Student must be the director, screenwriter and cameraperson. Can be fiction or nonfiction, with or without sound, animated or computer generated. All aspects of the film must be done by the student. No copyrighted images (such as cartoon characters) Entries must be recorded on DVD or CD and are limited to five (5) minutes. Save DVD as a file, not a movie, and watch it on a standard DVD player to make sure it can be viewed in this format. Power Point is not allowed for this category. Title, composer and performer of any background music is documented on entry form. Place CD in a cardboard or plastic case marked with name/grade/IL/year and length of piece. Place DVD in a large envelope along with entry form.

Film and Dance entries should be submitted in one of the following formats: .MPG/.MPEG, .MOV/QT (Quick Time Video), .WMV (Windows Media Video)

General Rules

1. All projects must be the original work of **ONE student** Projects advancing to the next PTA level must have a signed statement of originality granting permission to the National PTA and Illinois PTA to use their work. Student and parent/guardian signatures **must** be included on each “Student Entry Form,” which should be attached to the entry with masking tape only.
2. Each project **MUST** express the theme - “Beauty is...”
3. Work should be titled and clearly express the theme. If untitled, please mark it “Untitled.”
4. Students are **required** to submit an artist statement to describe what inspired their work and how it relates to the theme.
5. Work should be neat. Keep work from becoming wrinkled or torn.
6. Projects must include student’s name, grade and class on the **back** of the project (NOT ON THE FRONT)
7. Students may enter more than once in each category.
8. All projects must be received on or before the end of school Friday, October 16, 2009

TURN PROJECTS INTO MAIN OFFICE

**Detailed State Rules can be found on www.illinoispta.org website or www.pta.org
Questions? Contact Sue White 630-690-5660